

Guarantee:

UZIN provides a guarantee of 5 years on all the characteristics guaranteed in the fitting instructions.

- When laying the floor covering, take the generally accepted rules of the trade and technology and the applicable and the relevant national standard EN into account

Claims under the guarantee will be excluded if:

- Unusual influences affect the product, in particular of a chemical or mechanical nature
- A utilisation or application has taken place that deviates from the installation instructions.

In all cases, some adhesion tests must be carried out on-site before carrying out the application.

PRODUCT DATA SHEET & APPLICATION INSTRUCTIONS

High-performance adhesive tape for textile skirtings

Contact



Strong adhesion of whipped carpet

Product Properties / Benefits:

- ▶ Quick and clean
- ▶ Solvent-free, clean indoor air
- ▶ Permanently flexible
- ▶ Easy to use with Contact applicator

Applications:

▶ Suitable carpet skirting:

- with synthetic double backs (SDR)
- with textile action backs (TR)
- with latex foam backs

▶ Suitable walls:

- Breeze/plaster
- Brickwork
- Metal (untreated)
- Painted
- Synthetic material
- Wood
- Concrete
- Ceramics
- Plasterwork (primed)
- Wallpaper*
- Filled (primed)

▶ Not guaranteed:

- carpet skirting with PVC and PU backs
- needle punch
- Kugelgarn
- woven fitted carpet
- wooden strips
- dirt trap runners
- PVC soft skirting boards
- aluminium skirting
- core skirting boards

* see „Preparation“



for whipped carpet skirtings
ON surfaces with up to 1.5 mm deep texture

	Tape width	Skirting height
Contact 40	40 mm	45 mm – 55 mm
Contact 55	55 mm	60 mm – 70 mm
Contact 70	70 mm	75 mm – 85 mm
Contact 85	85 mm	90 mm – 110 mm

Technical Data:

Special acrylic adhesive

Will not dry out or become brittle

Application temperature from + 15 °C

Temperature resistant from – 40 °C to + 140 °C (when installed)

Shelf-life min. 2 years in original packaging; store protected from direct sunlight

Do not place rolls on to the cut surfaces without adhesive-resistant paper washers inbetween

APPLICATION INSTRUCTIONS

Preparation:

- ▶ Preparation of the sub-surface: The sub-surface must be dry, hard, flat, able to be walked on and free of grease, dust and silicone, in accordance with the appropriate valid standard EN.
- ▶ Wallpaper: must be firmly glued into place.
- ▶ Binding the dust: any dust must be consolidated with a solvent-free primer.

What you need:

- ▶ Contact, rubber hammer, carpet knife



1

- ▶ Fit the Contact on the back of the whipped carpet skirting



2

- ▶ Always pre-glue corners to a length of 20 cm



3

- ▶ Pull off the protective paper continuously
- ▶ Fit the carpet skirting free from tension and strain



4

- ▶ Tap in everywhere using the rubber hammer



5

- ▶ Before removing the protective paper, pre-bend the carpet skirting at the internal/external corners (to relieve the tension in the skirting)

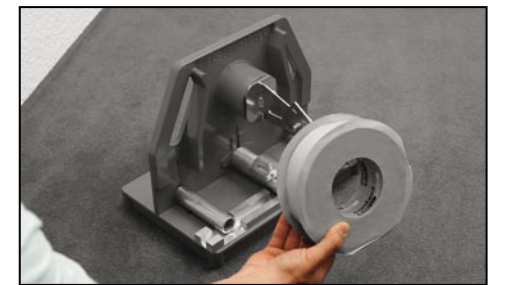


Contact applicator:

- ▶ Handling: This is a precision device and must be protected from pressure, impacts and falls.
- ▶ Positioning: Place the unit on the floor or fit securely to a table, for example, with a screw clamp.
- ▶ Cleaning: Dab off adhesive remnants with SUPERTape 7900 or remove using sewing machine oil. Do not use any solvents, as the adhesive could smear.

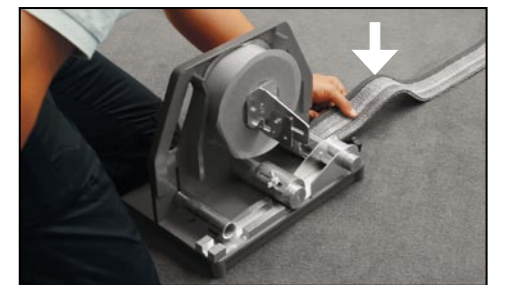
1

- ▶ Insert the roll without the spacer washer but with the protective paper, and lock



2

- ▶ Pull in the whipped carpet skirting from right to left
- ▶ The whipped side against the plate of the unit
- ▶ Lock the angled stopper



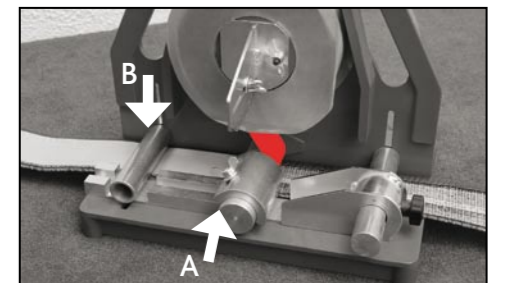
3

- ▶ Lay the Contact over the tape guide roller
- ▶ Glue to the back of the carpet skirting



4

- ▶ A) Adjust the tape guide roller
- ▶ B) Adjust the pressure roller
- ▶ Pull the carpet skirting through the applicator



5

- ▶ Butt up the next carpet skirting without a gap
- ▶ Continually pull through the Contact applicator

